

CDC2 Antibody (N-term)
Affinity Purified Rabbit Polyclonal Antibody (Pab)
Catalog # AP1497a

Specification

CDC2 Antibody (N-term) - Product Information

Application	FC, WB,E
Primary Accession	P06493
Other Accession	P13863 , P48734
Reactivity	Human
Predicted	Bovine, Chicken
Host	Rabbit
Clonality	Polyclonal
Isotype	Rabbit IgG
Calculated MW	34095
Antigen Region	1-29

CDC2 Antibody (N-term) - Additional Information

Gene ID 983

Other Names

Cyclin-dependent kinase 1, CDK1, Cell division control protein 2 homolog, Cell division protein kinase 1, p34 protein kinase, CDK1, CDC2, CDC28A, CDKN1, P34CDC2

Target/Specificity

This CDC2 antibody is generated from rabbits immunized with a KLH conjugated synthetic peptide between 1-29 amino acids from the N-terminal region of human CDC2.

Dilution

FC~~1:10~50

WB~~1:1000

E~~Use at an assay dependent concentration.

Format

Purified polyclonal antibody supplied in PBS with 0.09% (W/V) sodium azide. This antibody is purified through a protein A column, followed by peptide affinity purification.

Storage

Maintain refrigerated at 2-8°C for up to 2 weeks. For long term storage store at -20°C in small aliquots to prevent freeze-thaw cycles.

Precautions

CDC2 Antibody (N-term) is for research use only and not for use in diagnostic or therapeutic procedures.

CDC2 Antibody (N-term) - Protein Information

Name CDK1**Synonyms** CDC2, CDC28A, CDKN1, P34CDC2

Function Plays a key role in the control of the eukaryotic cell cycle by modulating the centrosome cycle as well as mitotic onset; promotes G2-M transition via association with multiple interphase cyclins (PubMed:[16407259](#), PubMed:[16933150](#), PubMed:[17459720](#), PubMed:[18356527](#), PubMed:[19509060](#), PubMed:[19917720](#), PubMed:[20171170](#), PubMed:[20935635](#), PubMed:[20937773](#), PubMed:[21063390](#), PubMed:[2188730](#), PubMed:[23355470](#), PubMed:[2344612](#), PubMed:[23601106](#), PubMed:[23602554](#), PubMed:[25556658](#), PubMed:[26829474](#), PubMed:[27814491](#), PubMed:[30139873](#), PubMed:[30704899](#)). Phosphorylates PARVA/actopaxin, APC, AMPH, APC, BARD1, Bcl-xL/BCL2L1, BRCA2, CALD1, CASP8, CDC7, CDC20, CDC25A, CDC25C, CC2D1A, CENPA, CSNK2 proteins/CKII, FZR1/CDH1, CDK7, CEBPB, CHAMP1, DMD/dystrophin, EEF1 proteins/EF-1, EZH2, KIF11/EG5, EGFR, FANCG, FOS, GFAP, GOLGA2/GM130, GRASP1, UBE2A/hHR6A, HIST1H1 proteins/histone H1, HMGA1, HIVEP3/KRC, KAT5, LMNA, LMNB, LBR, MKI67, LATS1, MAP1B, MAP4, MARCKS, MCM2, MCM4, MKLP1, MLST8, MYB, NEFH, NFIC, NPC/nuclear pore complex, PITPNM1/NIR2, NPM1, NCL, NUCKS1, NPM1/numatrin, ORC1, PRKAR2A, EEF1E1/p18, EIF3F/p47, p53/TP53, NONO/p54NRB, PAPOLA, PLEC/plectin, RB1, TPPP, UL40/R2, RAB4A, RAP1GAP, RBBP8/CtIP, RCC1, RPS6KB1/S6K1, KHDRBS1/SAM68, ESPL1, SKI, BIRC5/survivin, STIP1, TEX14, beta-tubulins, MAPT/TAU, NEDD1, VIM/vimentin, TK1, FOXO1, RUNX1/AML1, SAMHD1, SIRT2, CGAS and RUNX2 (PubMed:[16407259](#), PubMed:[16933150](#), PubMed:[17459720](#), PubMed:[18356527](#), PubMed:[19202191](#), PubMed:[19509060](#), PubMed:[19917720](#), PubMed:[20171170](#), PubMed:[20935635](#), PubMed:[20937773](#), PubMed:[21063390](#), PubMed:[2188730](#), PubMed:[23355470](#), PubMed:[2344612](#), PubMed:[23601106](#), PubMed:[23602554](#), PubMed:[25012651](#), PubMed:[25556658](#), PubMed:[26829474](#), PubMed:[27814491](#), PubMed:[30704899](#), PubMed:[32351706](#), PubMed:[34741373](#)). CDK1/CDC2-cyclin-B controls pronuclear union in interphase fertilized eggs (PubMed:[18480403](#), PubMed:[20360007](#)). Essential for early stages of embryonic development (PubMed:[18480403](#), PubMed:[20360007](#)). During G2 and early mitosis, CDC25A/B/C-mediated dephosphorylation activates CDK1/cyclin complexes which phosphorylate several substrates that trigger at least centrosome separation, Golgi dynamics, nuclear envelope breakdown and chromosome condensation (PubMed:[18480403](#), PubMed:[20360007](#), PubMed:[2188730](#), PubMed:[2344612](#), PubMed:[30139873](#)). Once chromosomes are condensed and aligned at the metaphase plate, CDK1 activity is switched off by WEE1- and PKMYT1-mediated phosphorylation to allow sister chromatid separation, chromosome decondensation, reformation of the nuclear envelope and cytokinesis (PubMed:[18480403](#), PubMed:[20360007](#)). Phosphorylates KRT5 during prometaphase and metaphase (By similarity). Inactivated by PKR/EIF2AK2- and WEE1-mediated phosphorylation upon DNA damage to stop cell cycle and genome replication at the G2 checkpoint thus facilitating DNA repair (PubMed:[20360007](#)). Reactivated after successful DNA repair through WIP1-dependent signaling leading to CDC25A/B/C-mediated dephosphorylation and restoring cell cycle progression (PubMed:[20395957](#)). Catalyzes lamin (LMNA, LMNB1 and LMNB2) phosphorylation at the onset of mitosis, promoting nuclear envelope breakdown (PubMed:[2188730](#), PubMed:[2344612](#), PubMed:[37788673](#)). In proliferating cells, CDK1-mediated FOXO1 phosphorylation at the G2-M phase represses FOXO1 interaction with 14-3-3 proteins and thereby promotes FOXO1 nuclear accumulation and transcription factor activity, leading to cell death of postmitotic neurons (PubMed:[18356527](#)). The phosphorylation of beta-tubulins regulates microtubule dynamics during mitosis (PubMed:[16371510](#)). NEDD1 phosphorylation promotes PLK1-mediated NEDD1 phosphorylation and subsequent targeting of the gamma-tubulin ring complex (gTuRC) to the centrosome, an important step for spindle formation (PubMed:[19509060](#)). In addition, CC2D1A phosphorylation regulates CC2D1A spindle pole localization and association with SCC1/RAD21 and centriole cohesion during mitosis (PubMed:[20171170](#)). The phosphorylation of Bcl-xL/BCL2L1 after prolonged G2 arrest upon DNA damage triggers apoptosis (PubMed:[19917720](#)). In contrast, CASP8 phosphorylation during mitosis prevents its activation by proteolysis and subsequent apoptosis (PubMed:[20937773](#)). This phosphorylation occurs in cancer cell lines, as well as in primary breast tissues and lymphocytes (PubMed:[20937773](#)). EZH2 phosphorylation promotes H3K27me3 maintenance and epigenetic gene silencing (PubMed:[20935635](#)). CALD1 phosphorylation promotes Schwann cell migration during peripheral nerve regeneration (By similarity). CDK1-cyclin-B complex phosphorylates NCKAP5L and mediates

its dissociation from centrosomes during mitosis (PubMed:[26549230](#)). Regulates the amplitude of the cyclic expression of the core clock gene BMAL1 by phosphorylating its transcriptional repressor NR1D1, and this phosphorylation is necessary for SCF(FBXW7)- mediated ubiquitination and proteasomal degradation of NR1D1 (PubMed:[27238018](#)). Phosphorylates EML3 at 'Thr-881' which is essential for its interaction with HAUS augmin-like complex and TUBG1 (PubMed:[30723163](#)). Phosphorylates CGAS during mitosis, leading to its inhibition, thereby preventing CGAS activation by self DNA during mitosis (PubMed:[32351706](#)). Phosphorylates SKA3 on multiple sites during mitosis which promotes SKA3 binding to the NDC80 complex and anchoring of the SKA complex to kinetochores, to enable stable attachment of mitotic spindle microtubules to kinetochores (PubMed:[28479321](#), PubMed:[31804178](#), PubMed:[32491969](#)).

Cellular Location

Nucleus {ECO:0000250|UniProtKB:P11440}. Cytoplasm {ECO:0000250|UniProtKB:P11440}. Mitochondrion. Cytoplasm, cytoskeleton, microtubule organizing center, centrosome. Cytoplasm, cytoskeleton, spindle. Note=Cytoplasmic during the interphase Colocalizes with SIRT2 on centrosome during prophase and on spindle fibers during metaphase of the mitotic cell cycle. Reversibly translocated from cytoplasm to nucleus when phosphorylated before G2-M transition when associated with cyclin-B1. Accumulates in mitochondria in G2-arrested cells upon DNA-damage

Tissue Location

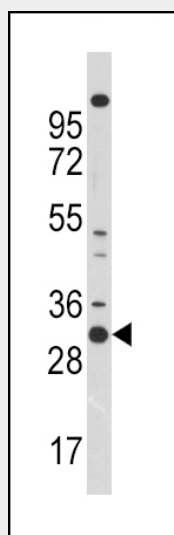
[Isoform 2]: Found in breast cancer tissues.

CDC2 Antibody (N-term) - Protocols

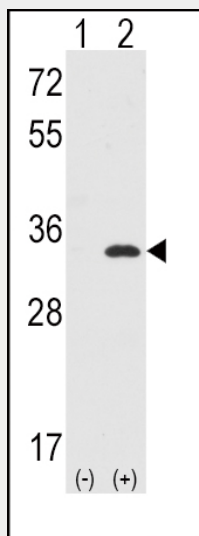
Provided below are standard protocols that you may find useful for product applications.

- [Western Blot](#)
- [Blocking Peptides](#)
- [Dot Blot](#)
- [Immunohistochemistry](#)
- [Immunofluorescence](#)
- [Immunoprecipitation](#)
- [Flow Cytometry](#)
- [Cell Culture](#)

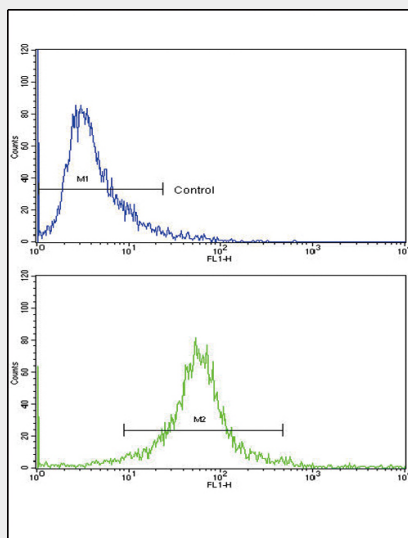
CDC2 Antibody (N-term) - Images



Western blot analysis of CDC2 Antibody (N-term) in 293 cell line lysates (35ug/lane). CDC2 (arrow) was detected using the purified Pab.



Western blot analysis of CDC2 (arrow) using rabbit polyclonal CDC2 Antibody (N-term) (Cat.#AP1497a).293 cell lysates (2 ug/lane) either nontransfected (Lane 1) or transiently transfected with the CDC2 gene (Lane 2) (Origene Technologies).



Flow cytometric analysis of 293 cells using CDC2 Antibody (N-term)(bottom histogram) compared to a negative control cell (top histogram). FITC-conjugated goat-anti-rabbit secondary antibodies were used for the analysis.

CDC2 Antibody (N-term) - Background

CDC2 is a member of the Ser/Thr protein kinase family. This protein is a catalytic subunit of the highly conserved protein kinase complex known as M-phase promoting factor (MPF), which is essential for G1/S and G2/M phase transitions of eukaryotic cell cycle. Mitotic cyclins stably associate with this protein and function as regulatory subunits. The kinase activity of this protein is controlled by cyclin accumulation and destruction through the cell cycle. The phosphorylation and dephosphorylation of this protein also play important regulatory roles in cell cycle control.

CDC2 Antibody (N-term) - References

Forester,C.M., Proc. Natl. Acad. Sci. U.S.A. 104 (50), 19867-19872 (2007)

Skoufias,D.A., J. Cell Biol. 179 (4), 671-685 (2007)

Hester,K.D., Cell Cycle 6 (13), 1594-1604 (2007)

CDC2 Antibody (N-term) - Citations

- [Targeting the overexpressed CREB inhibits esophageal squamous cell carcinoma cell growth.](#)